

BHX-500 "LE CUBE"

DHW storage modular tank

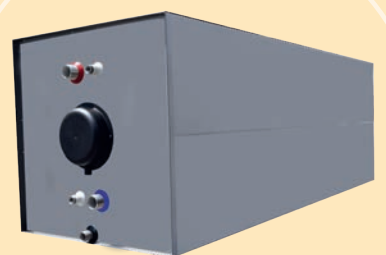


The BHX500 modular storage tanks are rectangular. They are specially designed for collective installations.

The tank is made of 316L stainless steel.

These tanks are to be placed on the floor, and can be stacked up to 3 high, allowing the volume to be modulated in 500 liters increments.

Its shape and size (less than 70 cm wide) make it particularly suitable for renovation.



Description

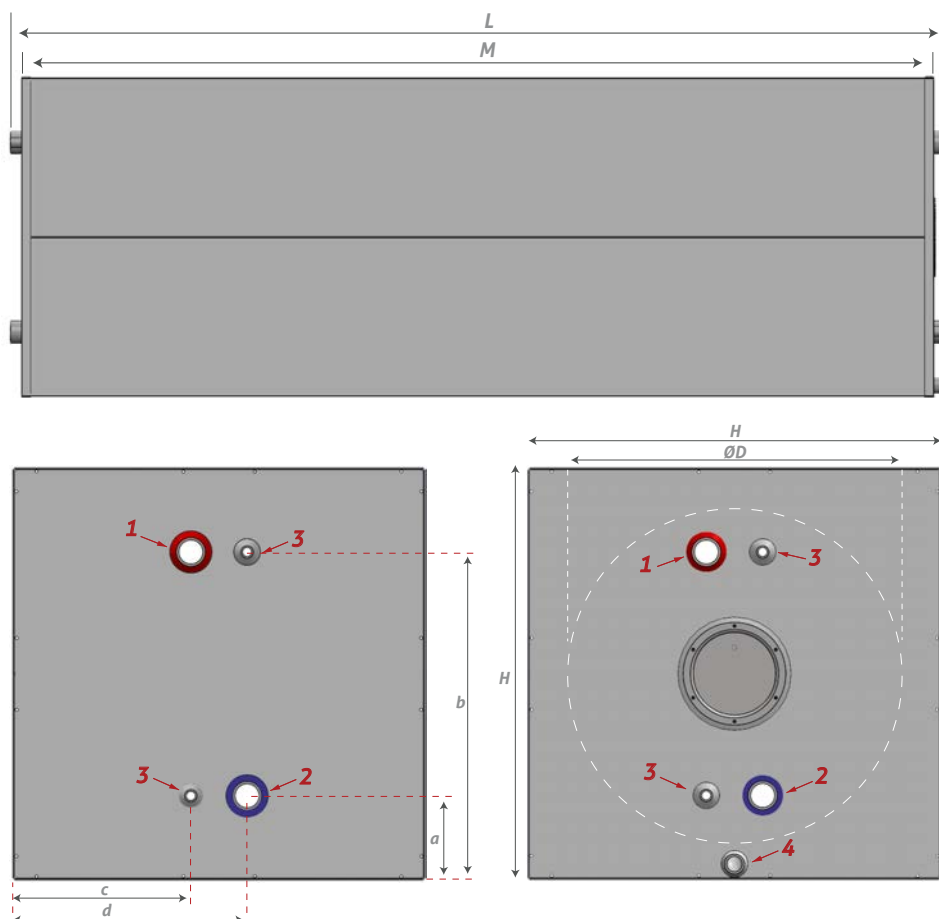
- Sanitary hot water storage tank* in stainless steel 316L, without heat exchanger
- Rigid PU insulation 45 mm thick, grey prepainted metal finish.
- Optional electric backup
- External casing classified as M0 fire.
- 10 years warranty, electric part 2 years warranty.

* Sanitary water according to French sanitary regulations and in particular with DTU 60.1



BHX 500 liters

Model	500 L
Reference	BHX0500
Total capacity (liters)	502
Weight empty (kg)	107
Rigid PU insulation	PU injected 45 kg/m3 - Thickness minimum 45 mm
Standing losses (W)	100
Flange (Ø mm)	110 / 170
Energy efficiency class	C
Maximum working-temperature (°C)	110
Optional electric backup	Stainless steel sleeve - Ceramic steatite 4800 W - 230V / 400 V with three-phase thermostat



Outlet/Inlet tube	Model 500
1 HW inlet / outlet	1" 1/2 M
2 CW inlet / outlet	1" 1/2 M
3 Probe	1/2" F
4 Drain	1" M

Storage tank 10 years warranty

Model	ØD	H	L	M	a	b	c	d
500	600	690	2020	1970	142	551	300	395

Dimensions (mm)



SYRIUS SOLAR INDUSTRY
15 rue du Perpignan - ZAC Descartes
34880 Lavérune - France

+33 (0) 4 67 82 00 18
contact@syrius-solar.fr

SAS with capital of € 156 800 - RCS Montpellier 794 797 753 00041

www.syrius-solar.com

