

# THERMOSIPHON SOLAR WATER HEATER WITH DOUBLE JACKET

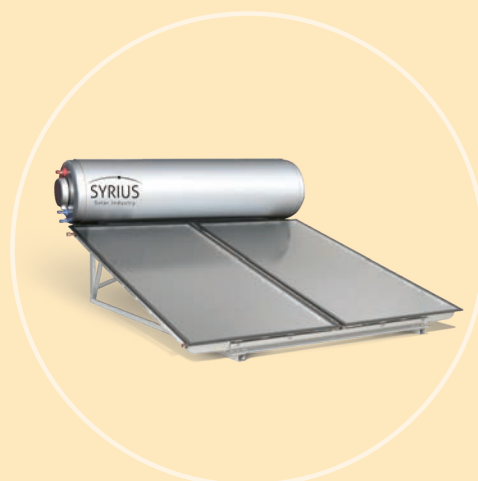
*TS EW*

---



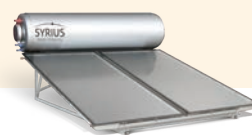
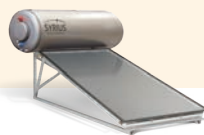
The thermosiphon I.S.W.H. with double jacket works in closed circuit : the antifreeze passes through collectors and the citern. The domestic water is located inside the citern, in a double jacket like a «bain-marie».

This product is recommended for very dirty water or for areas with frost risks.



# Set's detail

- Double jacket tank with enamelled steel, stainless steel outlets
- Solar collector(s)
- Tank / collectors connection kits in stainless steel with anti-UV insulation
- Sheet metal roof support made of Magnelis® steel and stainless steel screws  
(additional terrace support optional)
- Security group
- Fittings and joints



## TS 202 EW, 304 EW

Model

TS 202 EW

TS 304 EW

**Collector Sirius C2000 D12c** (cf product sheet for complete technical specifications)

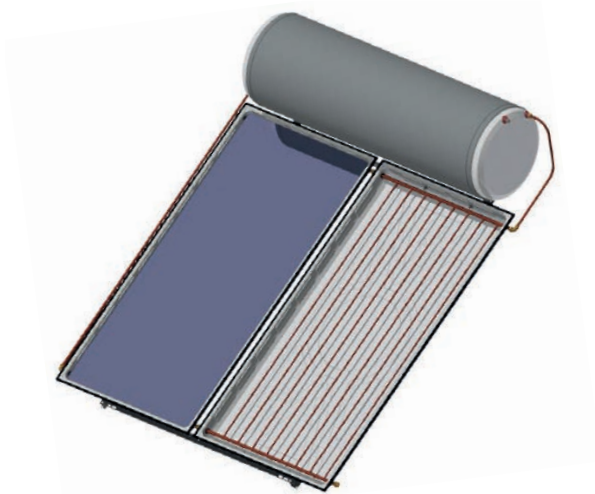
Dimensions (mm)	2033 x 1015 x 98	
Net weight (kg)	31	
Efficiency $\eta_{0,a}$ absorber area	78.8 %	
Heat loss coefficient a1	3.82 W/(m <sup>2</sup> .K)	
Heat loss coefficient a2	0.016 W <sup>2</sup> /(m <sup>2</sup> .K <sup>2</sup> )	
Covering	Low iron, tempered safety glass 3.2 mm	
Absorber type	Selective aluminum laser welded on Cu tubes	
Gross /net area (m <sup>2</sup> )	2.06 / 1.89	
Quantity	1	2
Total gross area (m <sup>2</sup> )	2	4

### Tank

Capacity (liters)	191	293
Dimensions (mm)	1415 x 585	1920 x 585
Net weight (kg)	90	117
Tank type	Steel enamelled coating, double jacket with stainless steel outlets	
Insulation	PU injected - Thickness minimum 50 mm	
Outlets	3/4" M - Stainless steel	
Optional electric backup	Immersion Heaters	

### Complete System

Net weight (kg)	137	198
Overall dimensions (mm)	1700 x 2560	2300 x 2560



**Collectors 10 years warranty**  
**Storage Tank 5 years warranty**  
**Supports 10 years warranty**

## Certifications

SolarKeymark collectors certification  
 078/000381



Made in France



**SYRIUS SOLAR INDUSTRY**  
 15 rue du Perpignan - ZAC Descartes  
 34880 Lavérune - France

+33 (0) 4 67 82 00 18  
 contact@syrius-solar.fr

SAS with capital of € 156 800 - RCS Montpellier 794 797 753 00041

[www.syrius-solar.com](http://www.syrius-solar.com)

